



SYS MODULE DATA CENTER



→ SYS MODULE DATA CENTER

BUSINESS MOBILE SOLUTIONS

The SYS Module solution is the new bid in the Data Center market that answers companies' anxieties regarding space, energy, investment and operational expenditure.

Portable, easily implemented and with short execution delays, **SYS Module** is the most advantageous solution for business's specific needs, namely in the telecommunications and energy sectors.

Ultra-efficient and modular, the **SYS Module** solution streamlines the implementation process, allowing companies to rapidly expand their data capacity.



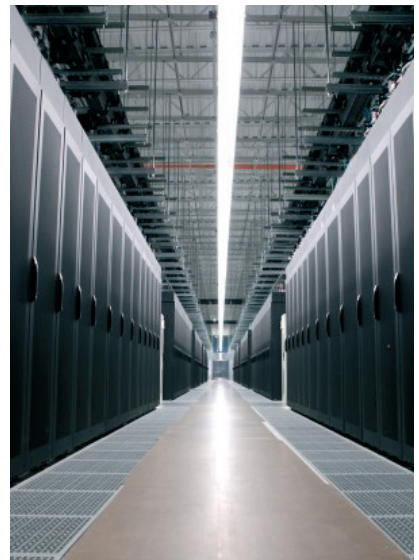
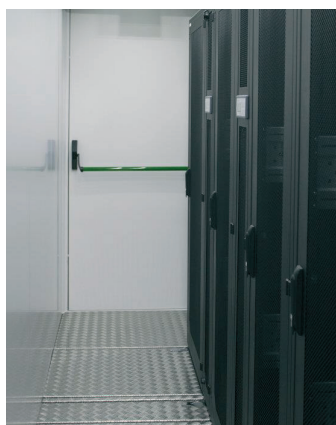
→ SYS MODULE DATA CENTER

Built based on a maritime container, in ISO format, the SYS Module solution presents equipments based on innovating technologies, with high energy efficiency:

- Portability
- External Operation in any kind of environment
- Pre-assembled
- Scalability
- TIER 3 or TIER 4 Design (customized according to customer's demands)
- Cables and tubes entrance sealing
- Free Cooling
- High Energy Efficiency – Low PUE
- Low TCO



HIGH DENSITY TECHNICAL ROOMS



→ SYS MODULE DATA CENTER

Maximum Protection, High efficiency

The SYS Module Solution ensures maximum protection against several kinds of anomalies and warrants high efficiency.

- Fire CF 120
- Temperature
- Dust
- Moisture
- Floods
- Electromagnetic Interferences

Integrated solutions

Designed according to the client's specifications, this model is equipped with the full energetic component, from common distribution to energy for racks, as well as with all types of air conditioning equipment for the Data Center's ventilation.

- Electrical Control Panel
- UPS
- Batteries
- Ventilation/Free Cooling
- Cabling
- Fire Detection and Extinction
- Rack (4 to 12 racks, with power variations between 5 and 30kW)
- Monitoring
- Box for connecting infrastructures to exterior (energy, communications, etc.)



The Data Center's efficiency is, thus, ensured by the creation of a variant in the width between the hot corridor and the cold corridor (spring and break mechanism, making the two racks circulate between the two corridors), conferring higher flexibility in small spaces. With prices slightly lower than the traditional solutions, the SYS Container module allows a labour cost reduction of around 50%.



www.sensysgroup.com

